



GMT MONTHLY MEMBERSHIP PROGRESS REPORT

Results as of: 6/30/2017

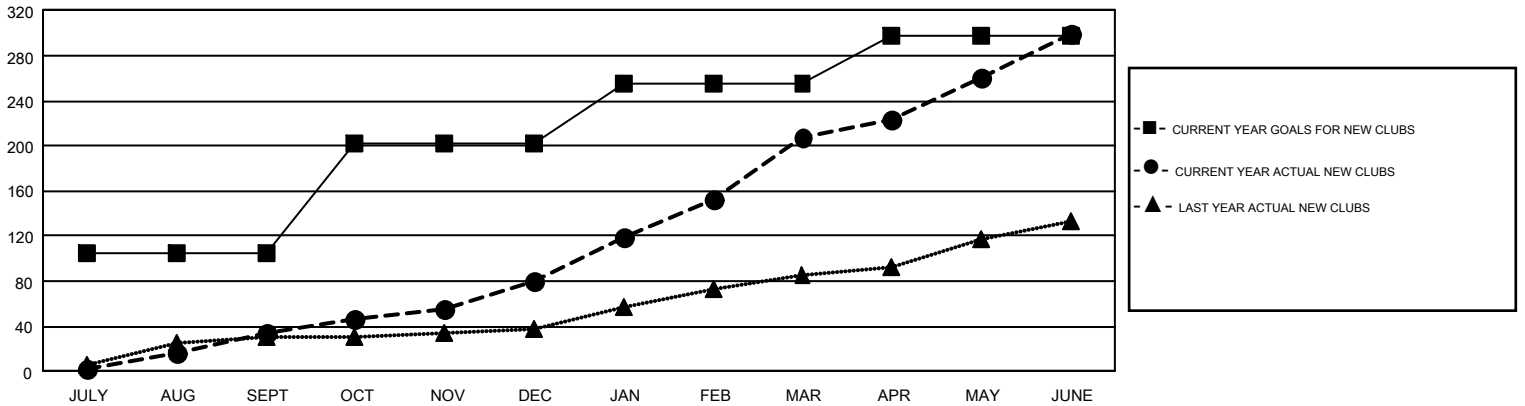
GMT Constitutional Area 5, Group E

GMT: OPEN

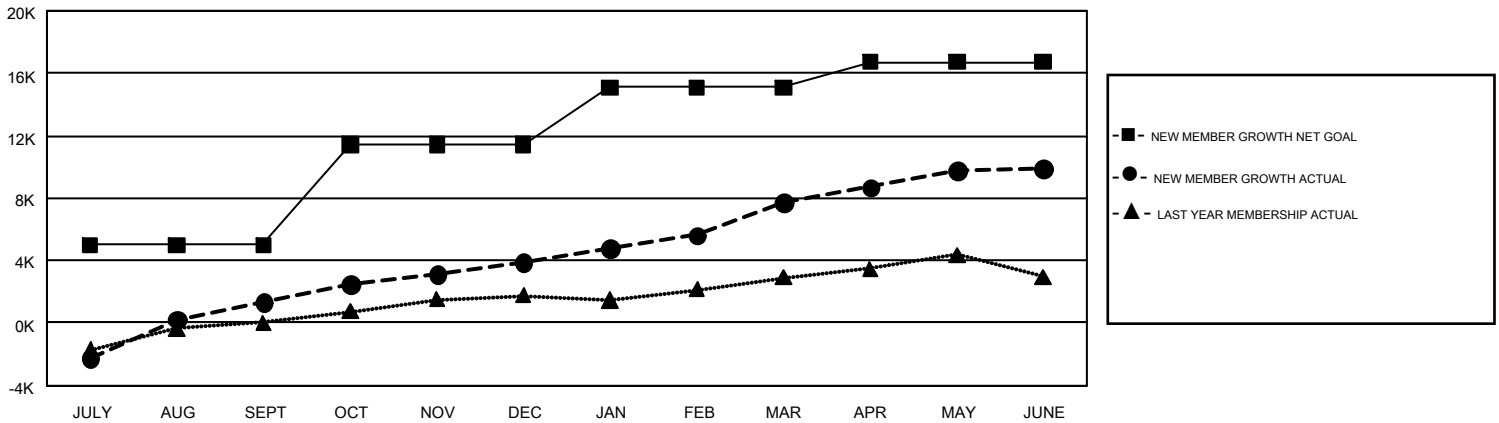
REPORT DOES NOT INCLUDE CLUBS IN UNDISTRICTED AREAS.

Clubs				Members			
RESULTS FOR 2016-2017				RESULTS FOR 2016-2017			
QUARTER	NEW CLUB GOAL	NEW CLUBS	DROPPED CLUBS	QUARTER	NEW MEMBER GROWTH NET GOAL (not reinstated or transfers)	NEW MEMBER GROWTH ACTUAL (not reinstated or transfers)	DROPPED MEMBERS ACTUAL (including transfers)
JULY/AUG/SEPT	105	35	15	JULY/AUG/SEPT	4,989	5,137	3,824
OCT/NOV/DEC	98	45	6	OCT/NOV/DEC	6,470	3,407	840
JAN/FEB/MAR	52	127	6	JAN/FEB/MAR	3,649	5,910	2,081
APR/MAY/JUNE	42	92	3	APR/MAY/JUNE	1,611	4,408	2,209

GOALS AND ACTUAL NEW CLUBS CUMULATIVE



GOALS AND ACTUAL MEMBERS CUMULATIVE



DROPPED CLUBS: 30	1,255 CLUBS OF 1,357 ADDED 1 OR MORE NEW MEMBERS	GENDER DISTRIBUTION
DROPPED MEMBERS	CLICK HERE FOR CUMULATIVE MEMBERSHIP DATA	MALE 28,890 (61.73%)
DECEASED 20		FEMALE 17,914 (38.27%)
CLUB CANCELLED 189		TOTAL FAMILY UNIT MEMBERS 2,886
OTHER 8,745		FAMILY MEMBERS PAYING HALF DUES 1,493
TOTAL 8,954		